

Dubai Marine - Hotel Tower



Dubai Marine - Hotel Tower



NAME	QUANTITY	AREA
ALL DAY DINING	1	340 SQ.M
ADMINISTRATION	1	155 SQ.M
GYM AREA	1	165 SQ.M
SPA AREA	1	105 SQ.M
POOL & TERRACE	1	300 SQ.M
CROSS AREA		1,480 SQ.M

Dubai Marine - Hotel Tower



NAME	QUANTITY	AREA
LOUNGE & CAFE	1	140 SQ.M
REC. & LOBBY	1	193 SQ.M
SHOPPE	3	152 SQ.M
OFFICE	1	52 SQ.M
STAY AREA	1	174 SQ.M
MECH. AREA	1	48 SQ.M
GROSS AREA		1,203 SQ.M

Dubai Marine - Hotel Tower



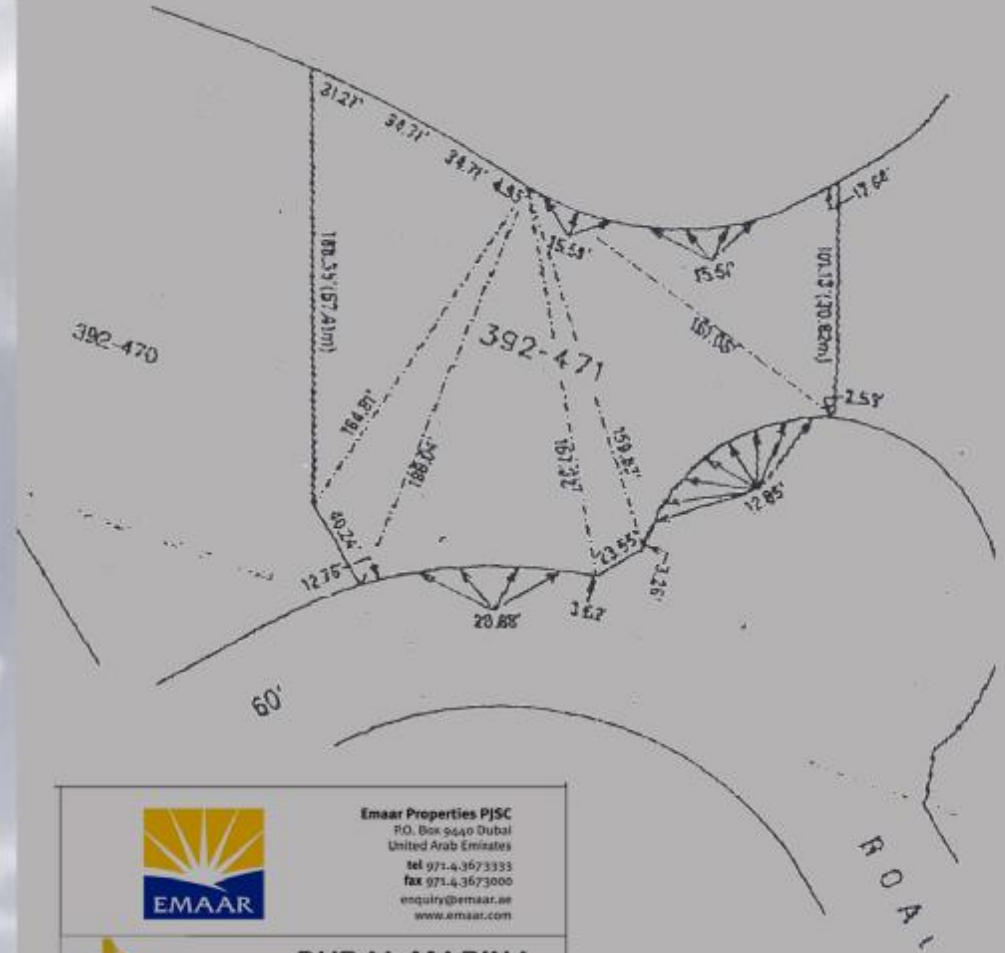
NORMAL SUITES TYPES		
NAME	QUANTITY	AREA
SUITE A	5	32 SQ.M X5
SUITE B	7	37 SQ.M X7
SUITE C	1	38 SQ.M
SUITE D	1	47 SQ.M
TOTAL	14	504 SQ.M
JUNIOR SUITES TYPES		
NAME	QUANTITY	AREA
SUITE E	1	73 SQ.M
SUITE F	1	72 SQ.M
TOTAL	2	145 SQ.M

GROSS AREA	650	SQ.M
------------	-----	------

Dubai Marine - Hotel Tower



Dubai Marine - Hotel Tower



		Emaar Properties PJSC P.O. Box 9640 Dubai United Arab Emirates tel 971 4 367 3333 fax 971 4 367 3000 enquiry@emaar.ae www.emaar.com
		DUBAI MARINA LAND DEVELOPMENT
DRAWING TITLE: GRADING PLAN - PLOT No 392-471 (3C)		
AREA:	Sqft _____ Sqm _____	DWG No: DX00120/GP/DT33C

Dubai Marine - Hotel Tower



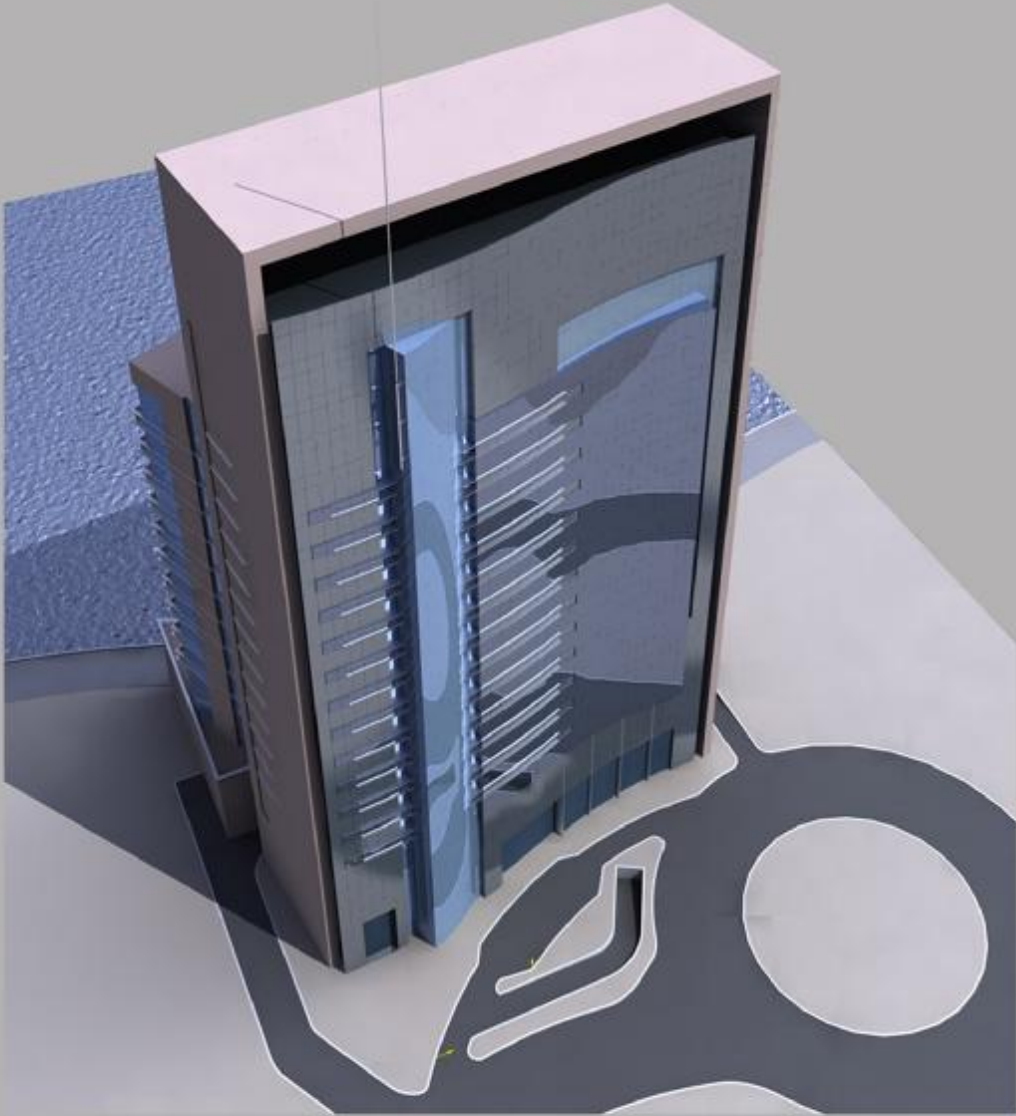
FLOT AREA : 3,085 SQ.M		
NAME	QUANTITY	AREA
RETAIL AREA	1	488 SQ.M
ENT. & LOBBY	1	76 SQ.M
ENG. SERVICE	1	87 SQ.M
ELE. AREA	1	385 SQ.M
GROSS AREA		1,470 SQ.M

Dubai Marine - Hotel Tower



NAME	QUANTITY	AREA
LOUNGE & CAFE	1	185 SQ.M
MEETING ROOM	3	260 SQ.M
BUSINESS CENTER	1	30 SQ.M
KITCHEN AREA	1	180 SQ.M
MECH. AREA	1	150 SQ.M
SERVICE AREA	1	105 SQ.M
POOL. SER. AREA	1	90 SQ.M
GROSS AREA		1,470 SQ.M

Dubai Marine - Hotel Tower



Dubai Marine - Hotel Tower



Dubai Marine - Hotel Tower

Project: Proposed Hotel (2 Basements + Ground + Mezz. +18 Typical Floor).
 Plot No. : 392-471
 Location: Marsha Dubai

	Calculation	Sq.ft.
Area of plot		3,065 sq.ft
Area of basement	2 x 2855 sq.ft	5,710 sq.ft
Area of ground floor		1,470 sq.ft
Area of mezzanine		1,470 sq.ft
Area of 1 st floor		1,480 sq.ft
Area of 2 nd floor		1,200 sq.ft
Area of typical floor (3 rd to 15 th)	13 x 1,153 sq.ft	14,909 sq.ft
Area of typical floor (16 th to 18 th)	3 x 950 sq.ft	2,850 sq.ft
Roof - Shisha bar		500 sq.ft
Total built up area		29,590 sq.ft

Service area in typical floor : 366 sq.m 31 %
 Usable area in typical floor : 787 sq.m 69 %

Commercial area in ground floor : 488 sq.m

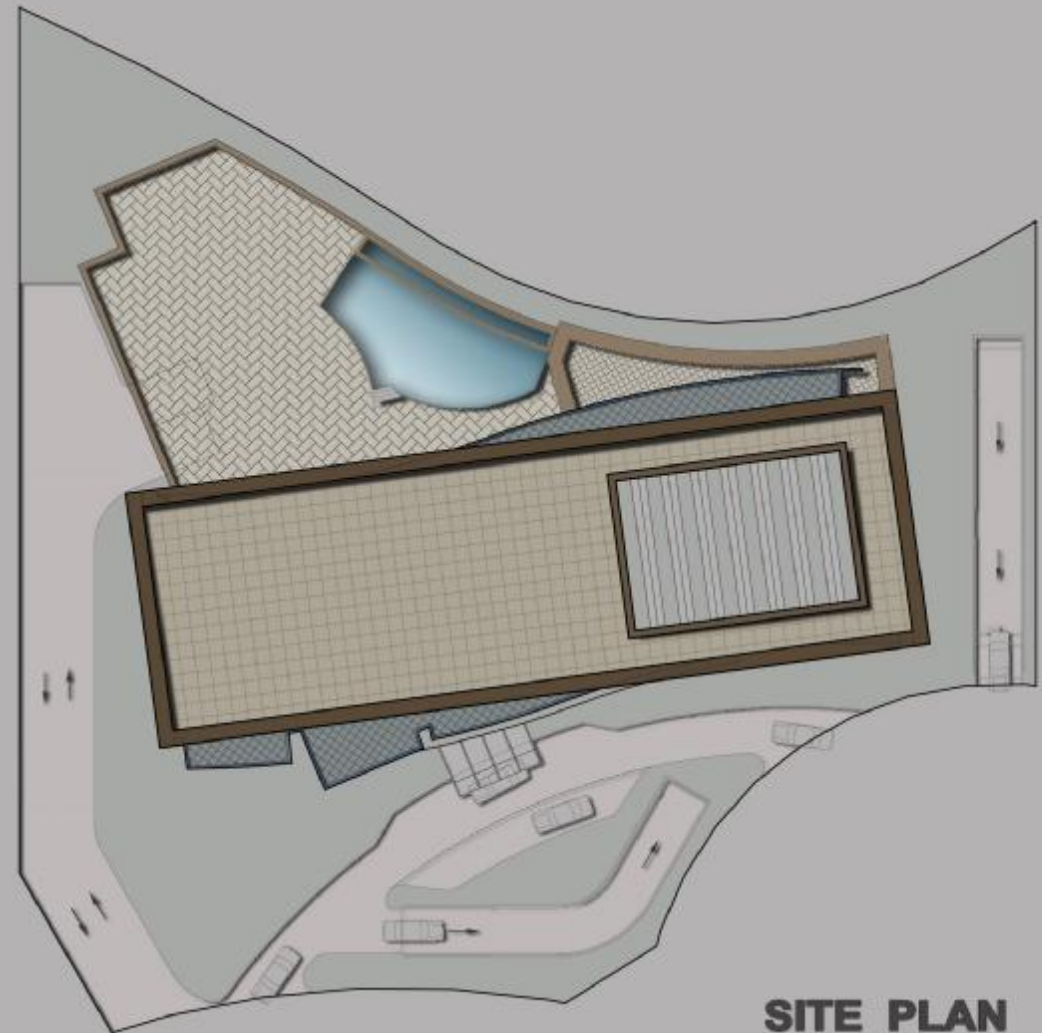
Typical floor (3rd to 15th) :

No. of normal suites : 182 suites
 No. of junior suites : 52 suites

Typical floor (16rd to 18th) :

No. of normal suites : 42 suites
 No. of junior suites : 6 suites

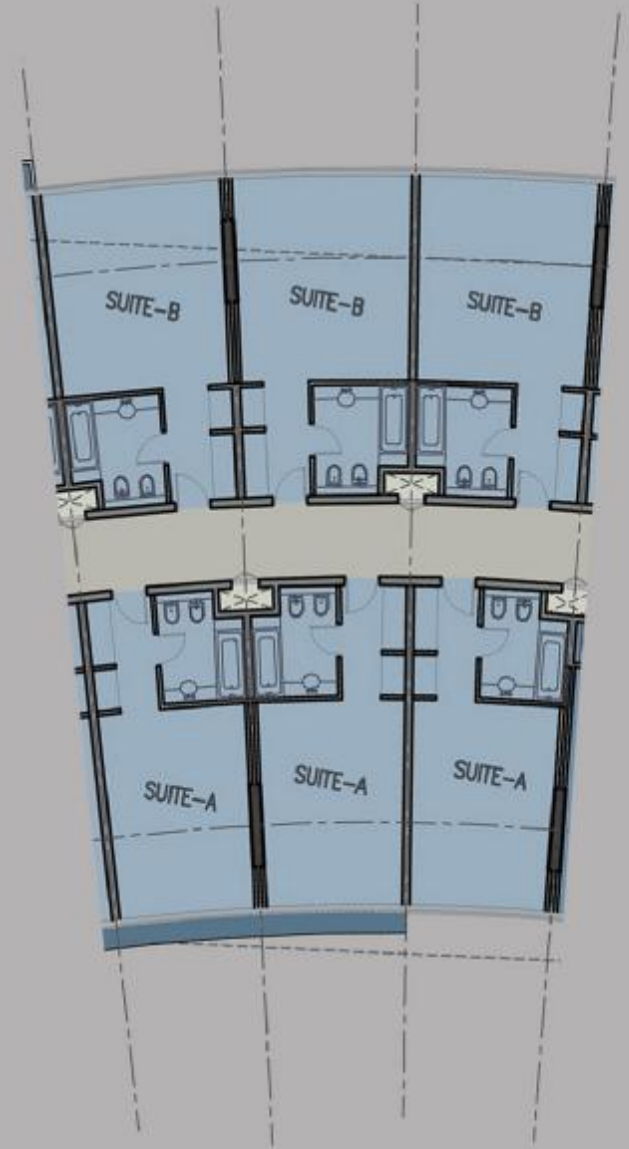
Total no. of suites : 282 suites



Dubai Marine - Hotel Tower



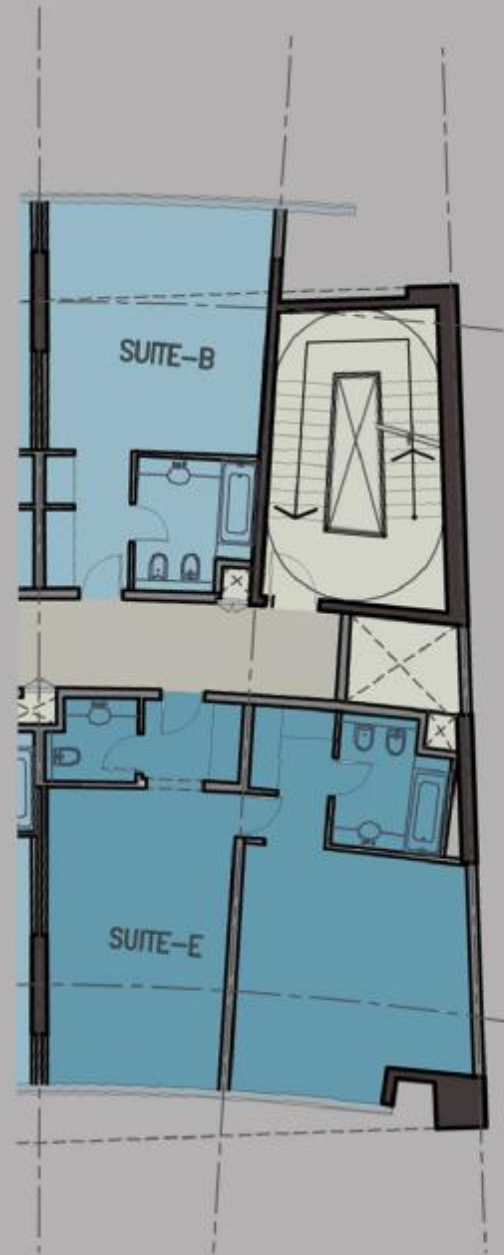
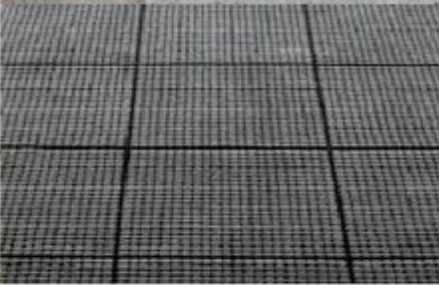
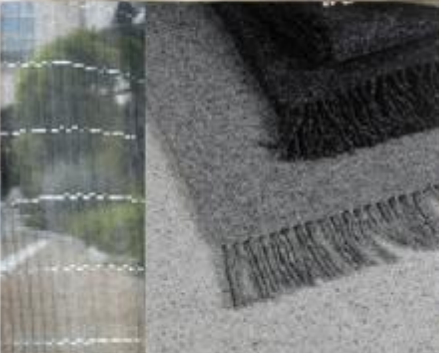
Dubai Marine - Hotel Tower



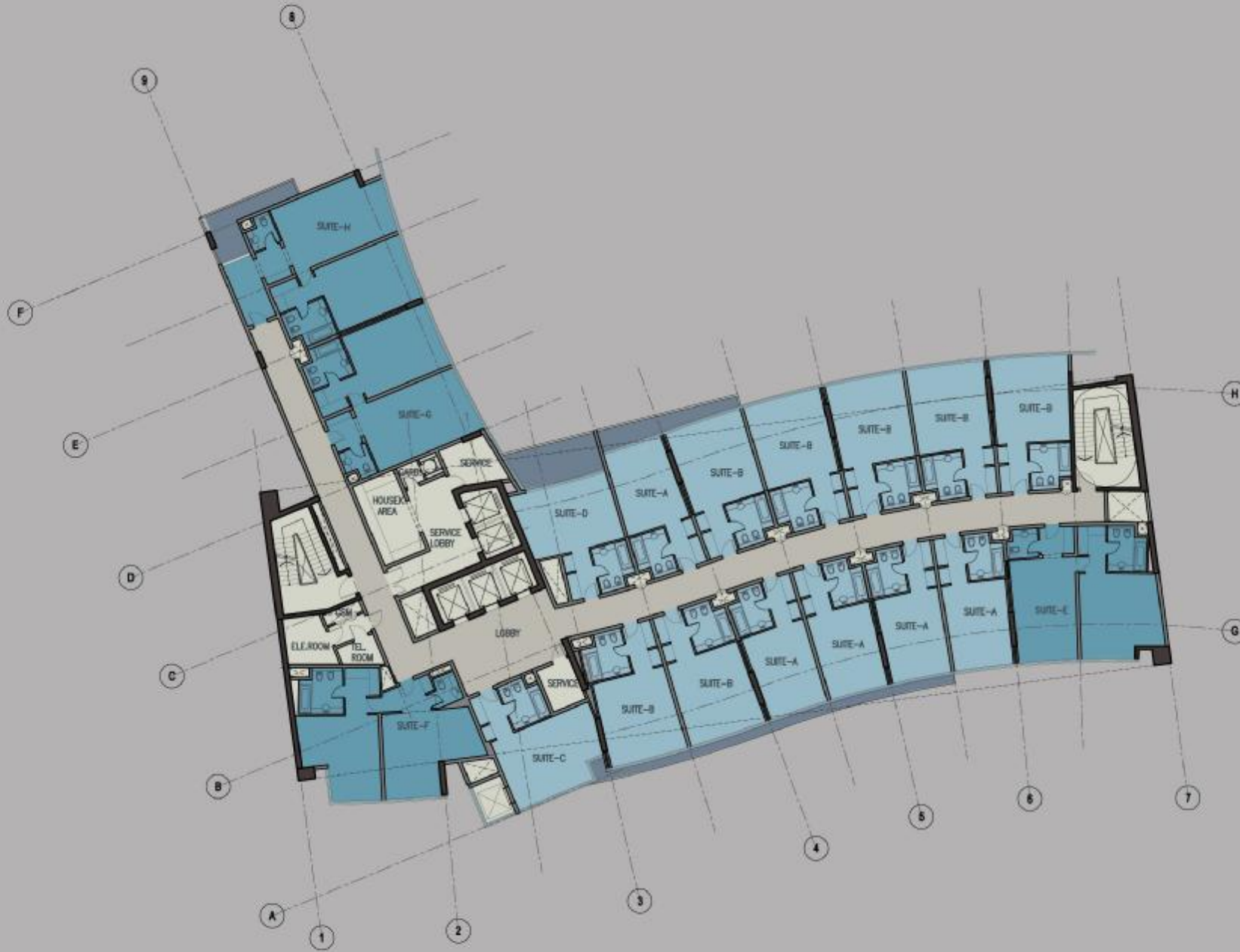
Dubai Marine - Hotel Tower



Dubai Marine - Hotel Tower



Dubai Marine - Hotel Tower



NORMAL SUITES TYPES		
NAME	QUANTITY	AREA
SUITE A	5	32 SQ.M X5
SUITE B	7	37 SQ.M X7
SUITE C	1	38 SQ.M
SUITE D	1	37 SQ.M
TOTAL	14	494 SQ.M

JUNIOR SUITES TYPES		
NAME	QUANTITY	AREA
SUITE E	1	73 SQ.M
SUITE F	1	72 SQ.M
SUITE E	1	88 SQ.M
SUITE F	1	80 SQ.M
TOTAL	4	293 SQ.M

GROSS AREA	1,153 SQ.M
------------	------------